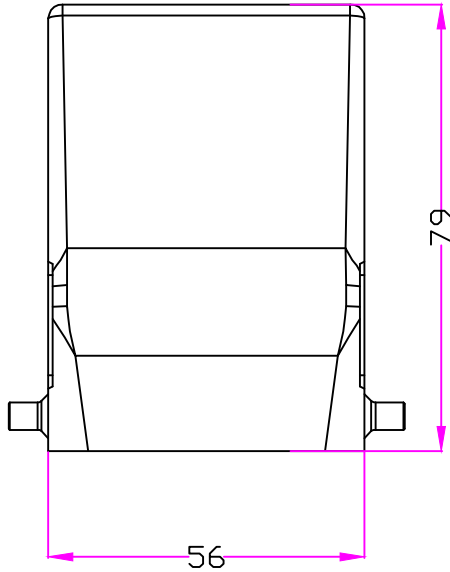
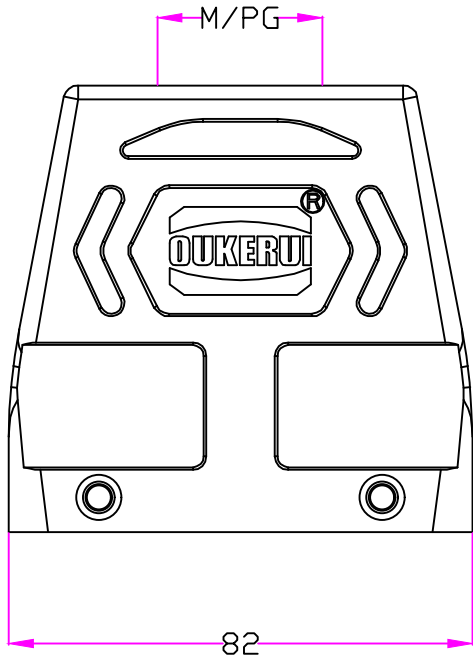



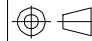
| REVISION DATA | | | | |
|---------------|-----|-------------|------|----------|
| SYM | ECN | DESCRIPTION | DATE | APPROVED |
| | | | | |
| | | | | |



技术参数：
 材料：压铸铝
 表面处理：粉末喷涂
 颜色：RAL7037灰色
 温度范围：-40℃~+125℃
 防护等级：IP65(联锁状态)
 出线方向：顶出线
 螺纹规格：M25/M32/PG21/PG29

Specifications:
 Material: aluminium die-cast
 Surface: powder-coated
 Color: Grey (RAL 7037)
 Limiting temperatures: -40℃~+125℃
 Degree of protection: IP65
 Cable entry: top entry
 Thread size: M25/M32/PG21/PG29



| | | | | | | | |
|---------------|---------|-----------|------|-------|---|---|-----|
| Tolerance | | SIGNATURE | DATE | Units | mm |  宁波欧科瑞连接器有限公司 NINGBO OKERUI CONNECTOR CO., LTD. | |
| 0~≤20 ±0.15 | DRAW | | | Size | A4 | | |
| 20~≤50 ±0.25 | DESIGN | | | Scale | | PART NAME: HZW-H32A-TKH-4g-M/PG | |
| 50~≤80 ±0.35 | CHECK | | | Sheet | | Drawing NO. | REV |
| 80~≤120 ±0.50 | APPROVE | | | Proj. |  | Material | A |